

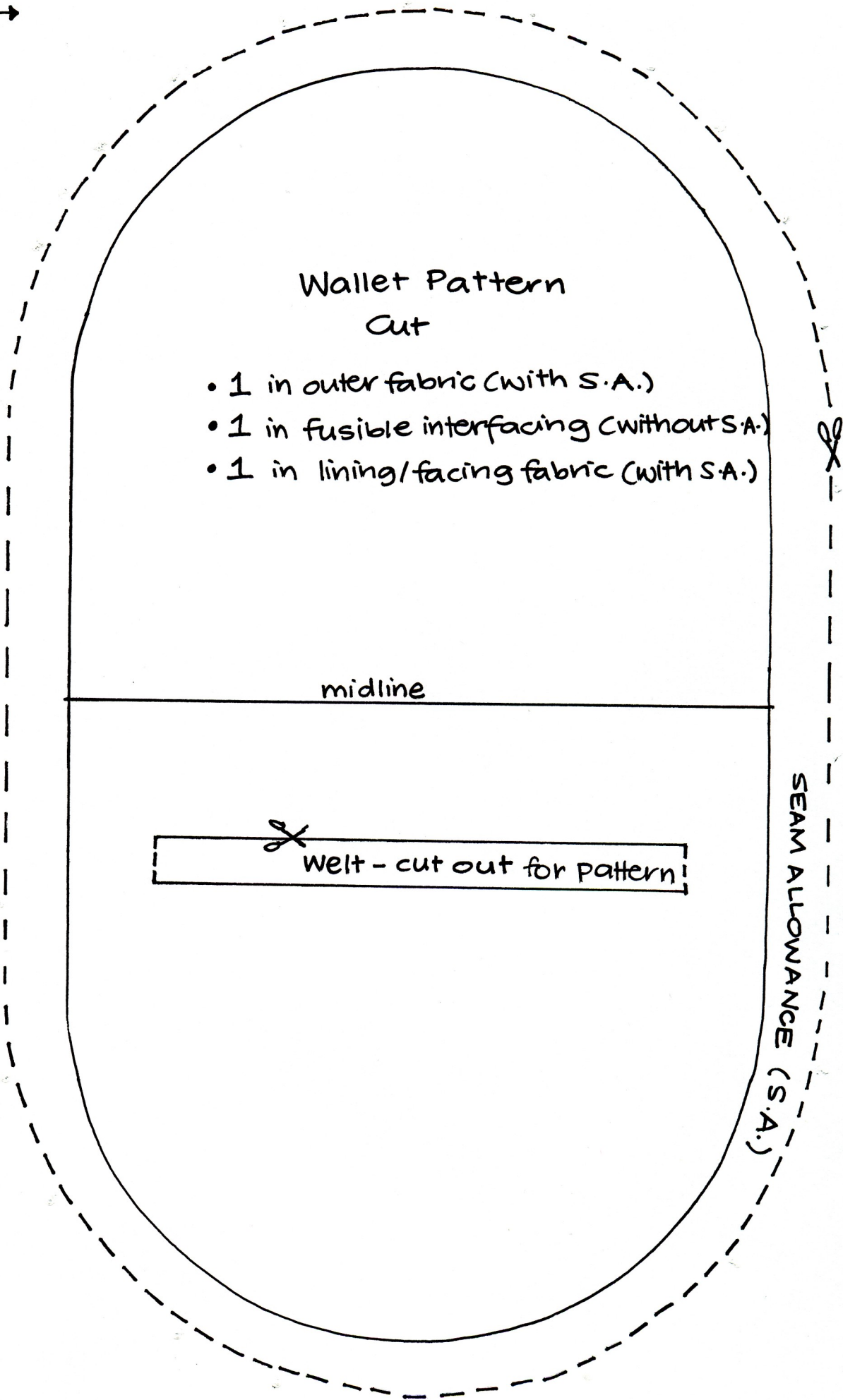
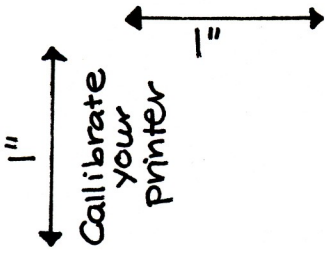
Wallet-Tote

© 2011 LiEr www.ikatbag.com

Key: — stitching line

--X-- cutting line

X— cutting line, but will be stitching on it later



Wallet Pattern Cut

- 1 in outer fabric (with S.A.)
- 1 in fusible interfacing (without S.A.)
- 1 in lining/facing fabric (with S.A.)

midline



Welt - cut out for pattern!

SEAM ALLOWANCE (S.A.)