

BASE cut 1
main, cut 1 interior

fold line

STRAP cut 1
main, cut 1 interior

SIDE c
main, cut

©the crafty kitty
for sew mama sew
owl bag

fold line

BAC
©t
for

©the crafty kitty
for sew mama sew
owl bag

or

cut 2
2 interior

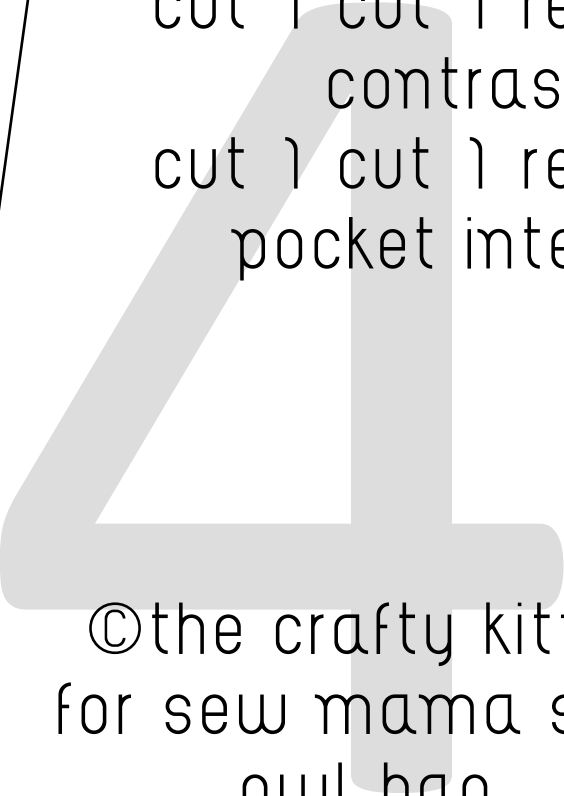
©the crafty kitty
for sew mama sew
owl bag

FLAP cut 1

contrast, cut 1 interior

©the crafty kitty
for sew mama sew
owl bag

K-cut 1 contrast
the crafty kitty
sew mama sew
owl bag



SIDE POCKET-
cut 1 cut 1 reverse
contrast
cut 1 cut 1 reverse
pocket interior

©the crafty kitty
for sew mama sew
owl bag

fold line

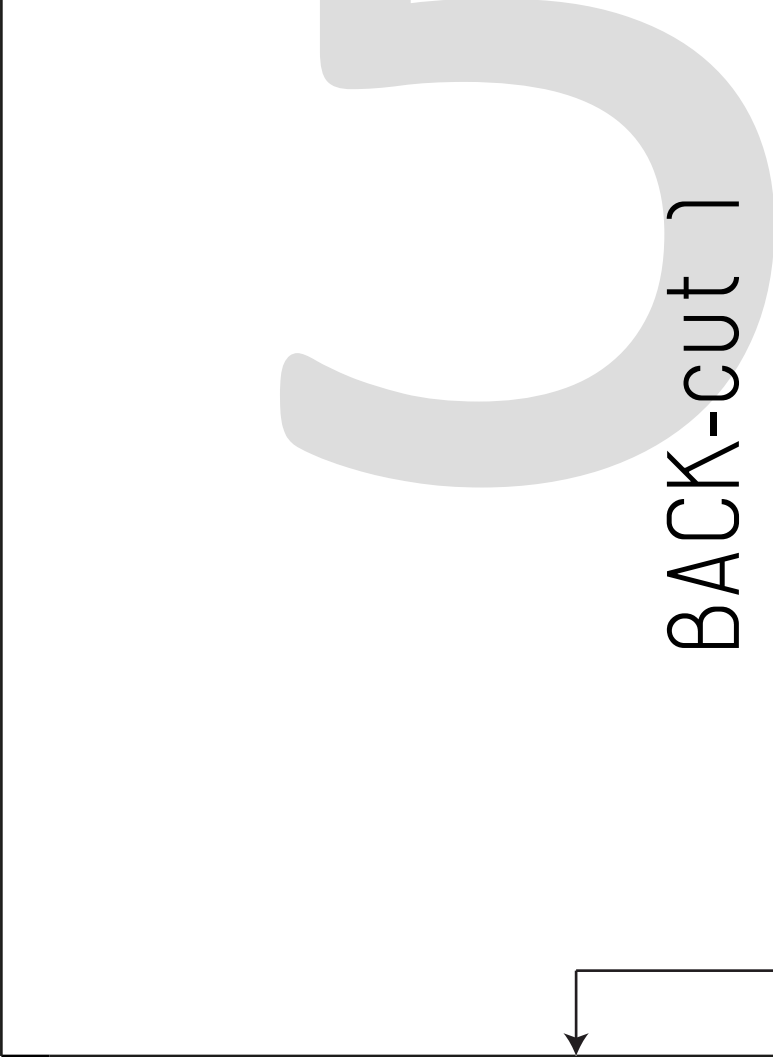
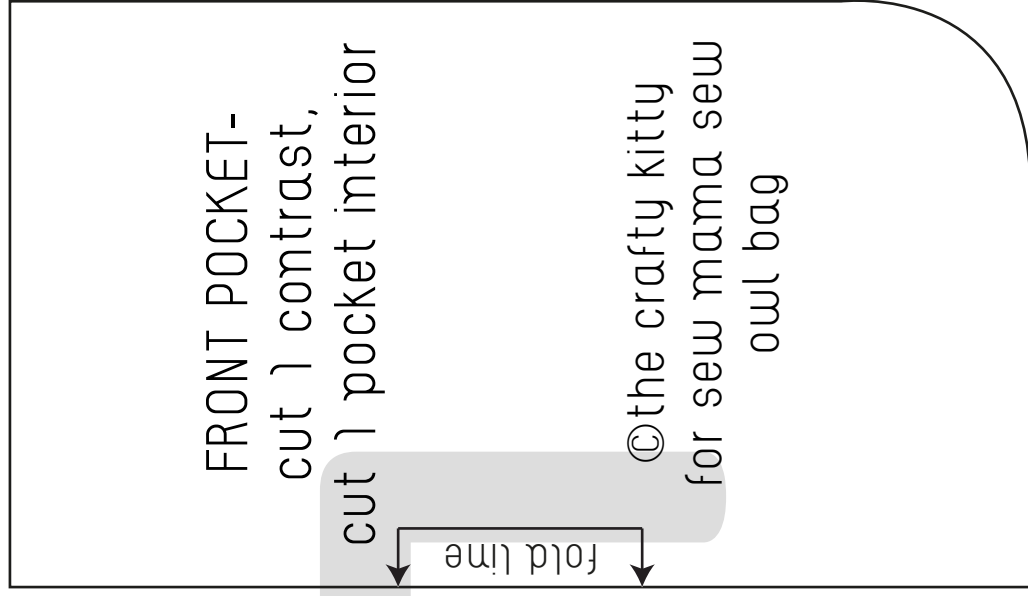
BACK-cut 1
main

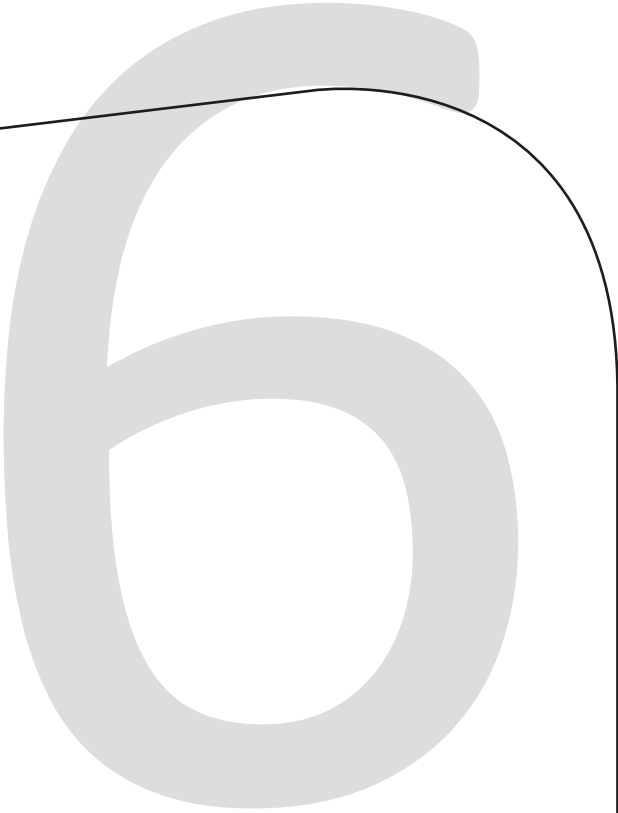
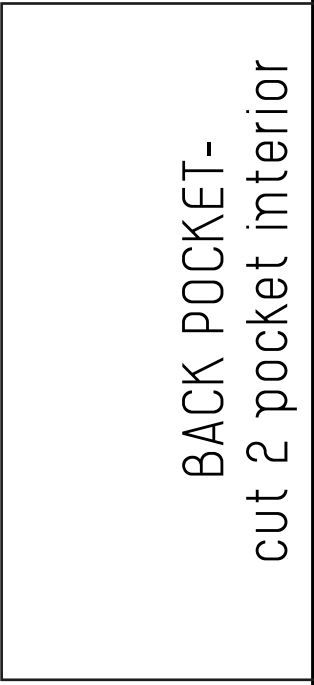
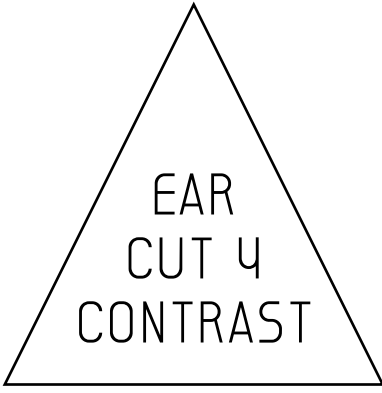
©the crafty kitty
for sew mama sew
owl bag

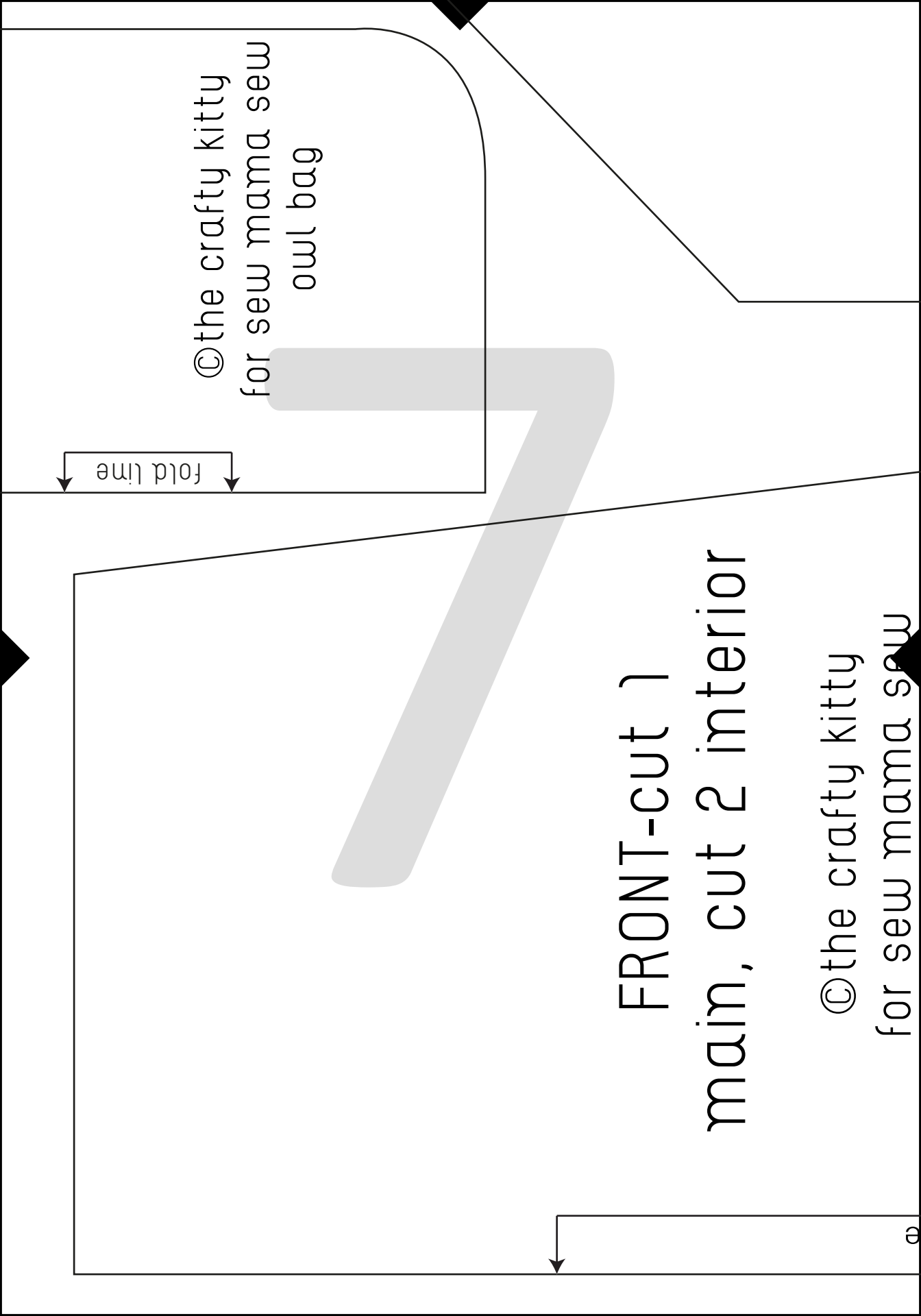
FRONT POCKET-
cut 1 contrast,
cut 1 pocket interior

©the crafty kitty
for sew mama sew
owl bag

fold line







©the crafty kitty
for sew mama sew
owl bag

fold line

FRONT-cut 1
main, cut 2 interior

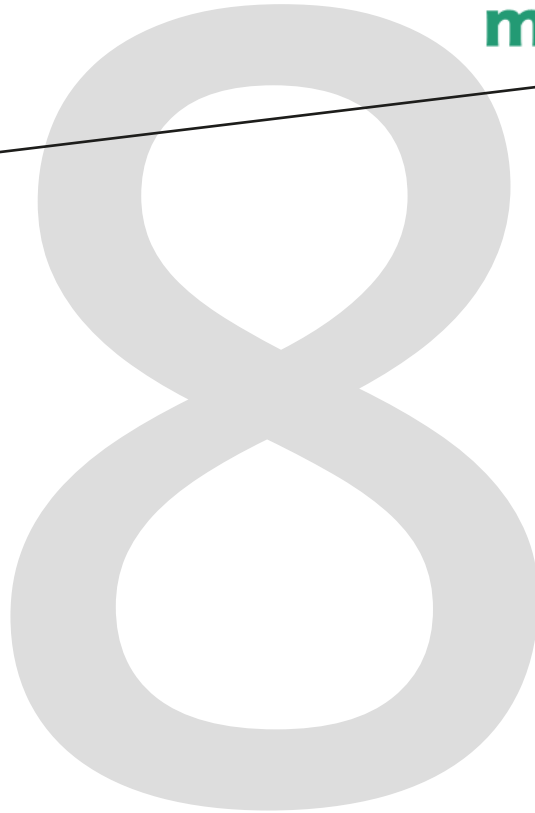
©the crafty kitty
for sew mama sew

©

Owl Bag

THE CRAFTY KITTY

for



owl bag

fold line

