



tagalong

{ teddy }

finished size

13" (33 cm) from ears to feet

what you'll need

Tagalong Teddy patterns on side C of the insert

¼ yd (23 cm) of cotton terry or other soft-textured knit such as Minky or velour for the bear body

8" × 8" (20.5 × 20.5 cm) piece of printed cotton for ears, tummy, and foot pads

6" × 11" (15 × 28 cm) piece of wool-blend felt for vest

2" × 3" (5 × 7.5 cm) piece of wool-blend felt for muzzle

1" × 1" (2.5 × 2.5 cm) squares of red, black, and gray wool-blend felt for heart, eyes, and nose

8½" × 11" (21.5 × 28 cm) piece of double-sided fusible webbing

Coordinating thread

Coordinating embroidery floss and needle

Polyester stuffing

Your sewing box

Ballpoint needle for your sewing machine

Pinking shears

Handsewing needle

Walking foot for your sewing machine (optional)

Tagalong Teddy knows how to be a good friend. With big ears for listening, soft paws to hold on to, and a sweet smiling face, this bear is sure to be a favorite companion for any little one. Based on simple, ragdoll-style construction, Tagalong Teddy is a great beginner-level stuffed animal. The removable vest can be customized by adding embroidered details, making it even more special.

As always, young children should be supervised when playing with handmade toys.



prepare materials

Using the patterns, cut from the knit fabric:

- 2 Bear Heads
- 2 Ears
- 2 Body pieces
- 2 Arms
- 2 reversed Arms
- 2 Legs
- 2 reversed Legs
- 1 Tail

Using the pattern, cut from the printed cotton:

- 2 Ears

Using the pattern, cut from the felt:

- 1 Vest

Using the patterns, trace the appliqué onto the fusible webbing with a pencil, then cut loosely outside of the pencil line:

- 1 Tummy
- 2 Foot Pads
- 1 Nose
- 1 Heart
- 2 Eyes
- 1 Muzzle

Fuse the Appliqués

1 Using an iron, fuse each piece of webbing to the wrong side of the desired appliqué felt or fabric. Cut out each shape directly on the pencil line and peel off the paper backing.

Embellish the Bear's Face and Body

2 Place the Muzzle piece right side up onto the right side of one of the Bear Head pieces, following the pattern placement guide. Cover with a press cloth and fuse to the head. Using embroidery floss, embroider the edge using a blanket stitch (see Techniques, page 154, for embroidery stitch directions).

3 Fuse the Nose and Eye pieces in place and use a small whipstitch around the edges with matching thread or floss. Add a white highlight to each eye by making a small French knot (just two wraps of embroidery floss around the needle).

4 Using gray embroidery floss, stitch the mouth and snout with a backstitch.

5 Place the Tummy piece right side up onto the right side of one of the Bear Body pieces, following the pattern placement guide. Cover with a press cloth and fuse to the body.

Using embroidery floss, embroider the edge using a blanket stitch.

6 Fuse the felt Heart piece to the teddy bear's chest in the same way, then whipstitch the edges to secure.

Sew the Ears

7 Place one printed cotton Ear piece on top of one terry Ear piece, right sides together. Pin, then sew with a ¼" (6 mm) seam allowance around the curve, leaving the straight ends open. Turn through the opening and press.

Fold the sewn ear in half, top to bottom, and stitch a ⅛" (3 mm) tuck from the back through all of the layers (figure 1).

Repeat for the bear's second ear.

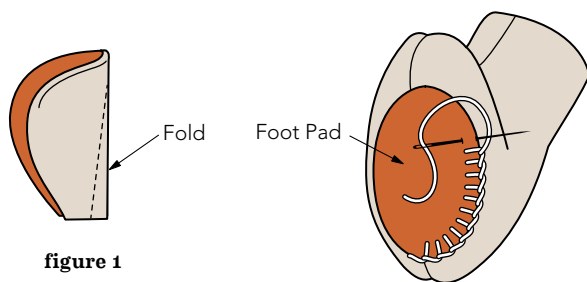


figure 1

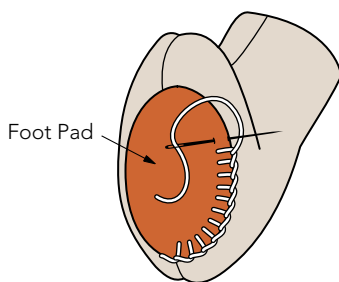


figure 2

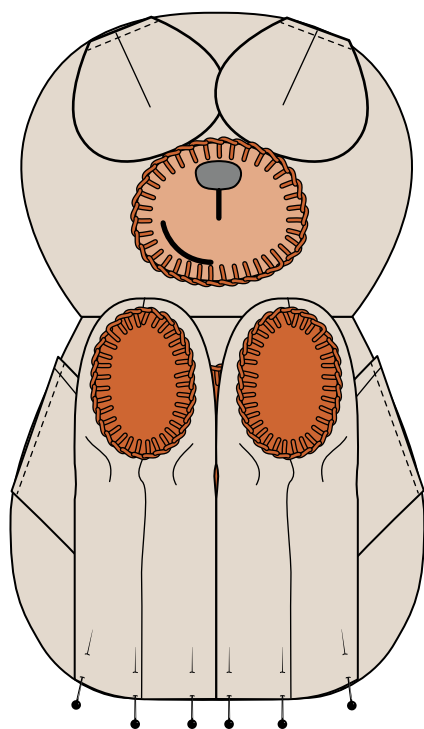


figure 3

A Note about Sewing Knits

Sometimes sewing knits can be tricky. It's important to use a ballpoint needle and plenty of pins to secure the layers of fabric and to sew slowly. If your machine has a walking foot normally used for quilting, using it to sew knits can help reduce stretching as you stitch.

Sew the Arms and Legs

8 Layer and pin two (one reversed) of the four Arm pieces right sides together. Sew with a $\frac{1}{4}$ " (6 mm) seam allowance, leaving the short, straight end open.

Turn the arm right side out and fill with stuffing, leaving the last $\frac{1}{2}$ " (1.3 cm) unstuffed.

Repeat for the bear's second arm.

9 Layer and pin two (one reversed) of the four Leg pieces right sides together and sew with a $\frac{1}{4}$ " (6 mm) seam allowance, leaving the short, straight end open.

Turn right side out and fill with stuffing, leaving the last $\frac{1}{2}$ " (1.3 cm) unstuffed.

10 Place one of the Foot Pad pieces onto the bottom of one of the feet, webbing side down. With an iron, carefully fuse it to the foot, covering the seam. Using embroidery floss, embroider the edge of the Foot Pad using a blanket stitch (**figure 2**).

Repeat both steps for the bear's second leg.

Sew the Head to the Bear's Body

11 Layer the sewn ears, print side down, onto the right side of the embellished Head piece at the pattern markings, aligning the raw edges. Machine baste the ears to the head with a $\frac{1}{8}$ " (3 mm) seam allowance. Place the embellished Head piece right sides together onto the embellished Body piece, aligning the neck seam.

Pin and sew the Head to the Body with a $\frac{1}{4}$ " (6 mm) seam allowance.

12 Repeat, sewing the neck seam for the back Head and back Body pieces.

Assemble the Bear

13 Following the pattern markings, layer the sewn and stuffed arms onto the front Body piece. Pin the raw edges of the arms along the sides of the Body. Machine baste $\frac{1}{8}$ " (3 mm) from the edge.

14 Layer the sewn and stuffed legs onto the front Body piece and pin the raw edges along the bottom of the Body. Machine baste $\frac{1}{8}$ " (3 mm) from the edge (**figure 3**, page 73).

15 Fold the arms in on top of the Body and let the legs hang down away from the Body. Layer the back head and body section on top of the front head and body section, right sides together. Pin, sandwiching the arms and ears between layers.

Sew around the perimeter, leaving the bottom edge open (**figure 4**). Trim the curved seam allowances with pinking shears, then turn the bear right side out.

16 Stuff the bear's head and body with stuffing. Ladder stitch (see Techniques, page 154) the bottom closed.

17 With a needle and thread, make a running stitch around the perimeter of the Tail piece. Partially gather the stitches and stuff the Tail. Pull tight and stitch it closed. Ladder stitch the sewn tail to the bear's behind.

18 To make the vest, fold the collar as indicated on the pattern with dashed lines. Stitch down the corners of the collar with an X of embroidery floss. Dress your bear!

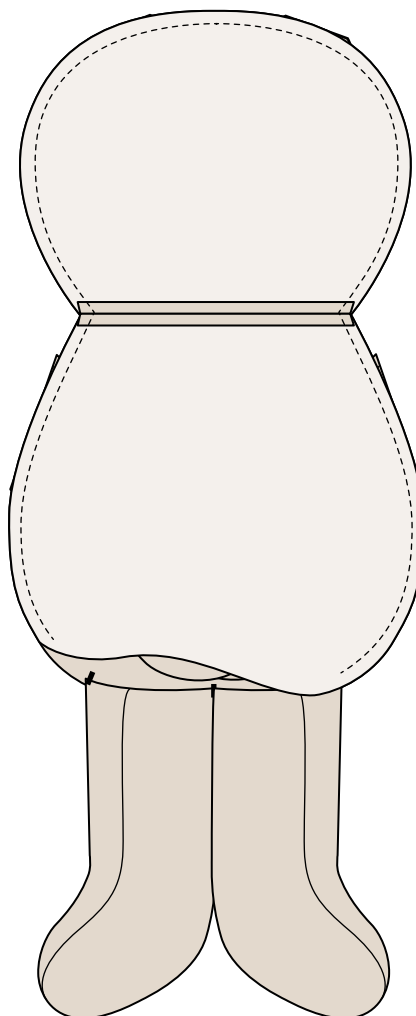


figure 4



stitched with meaning *turn outdated knits into cuddly teddy bears*

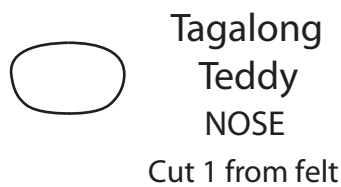
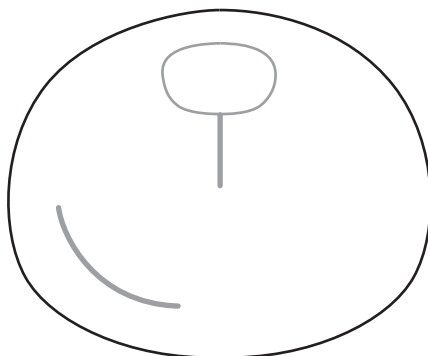
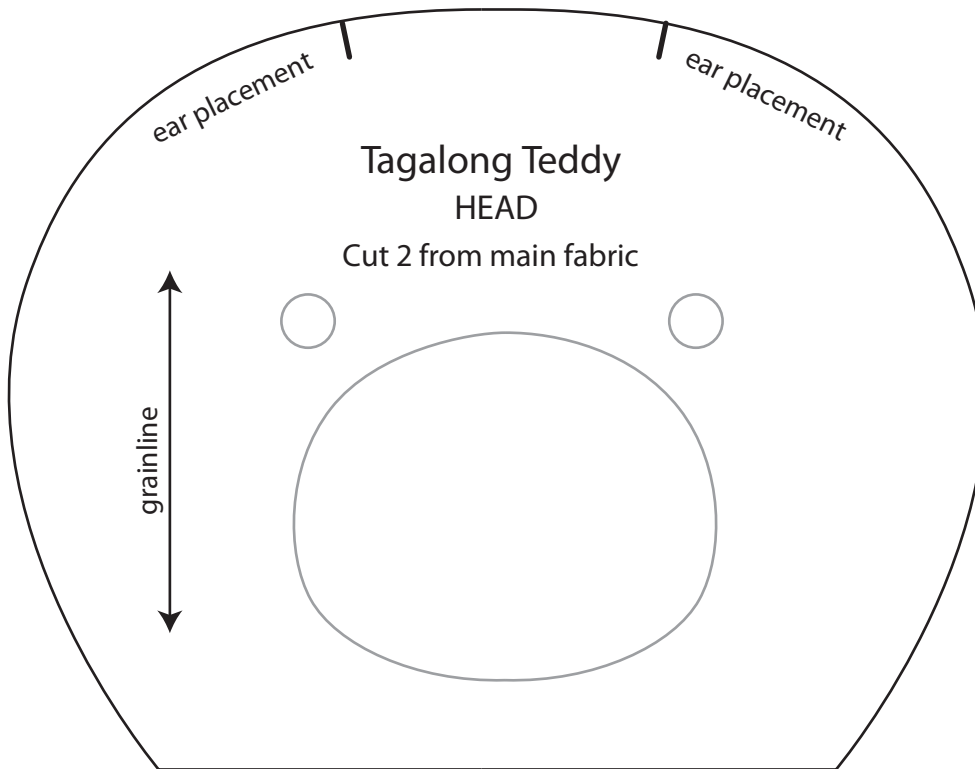
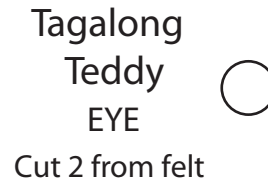
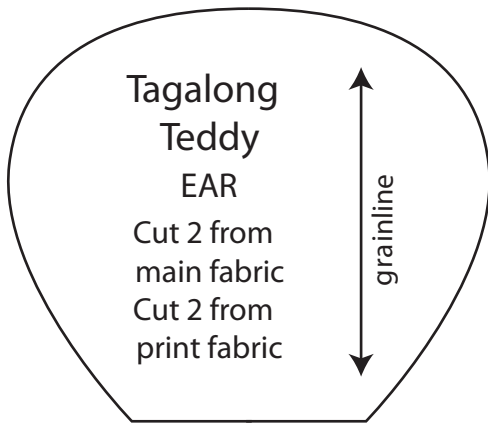
For a super-lux stuffed bear, swap out the terry cloth for a buttery rich cashmere knit. Fine-gauge cashmere sweaters, especially those with outdated styling, can be found at thrift stores at an affordable price. Fuzzy fleece tops, velour leggings, and other soft knits are great opportunities for upcycling as well.

present perfect

{ pattern insert }

By Betz White

* Tagalong Teddy

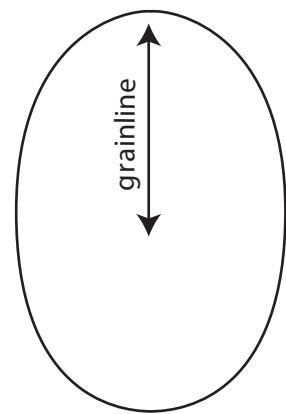
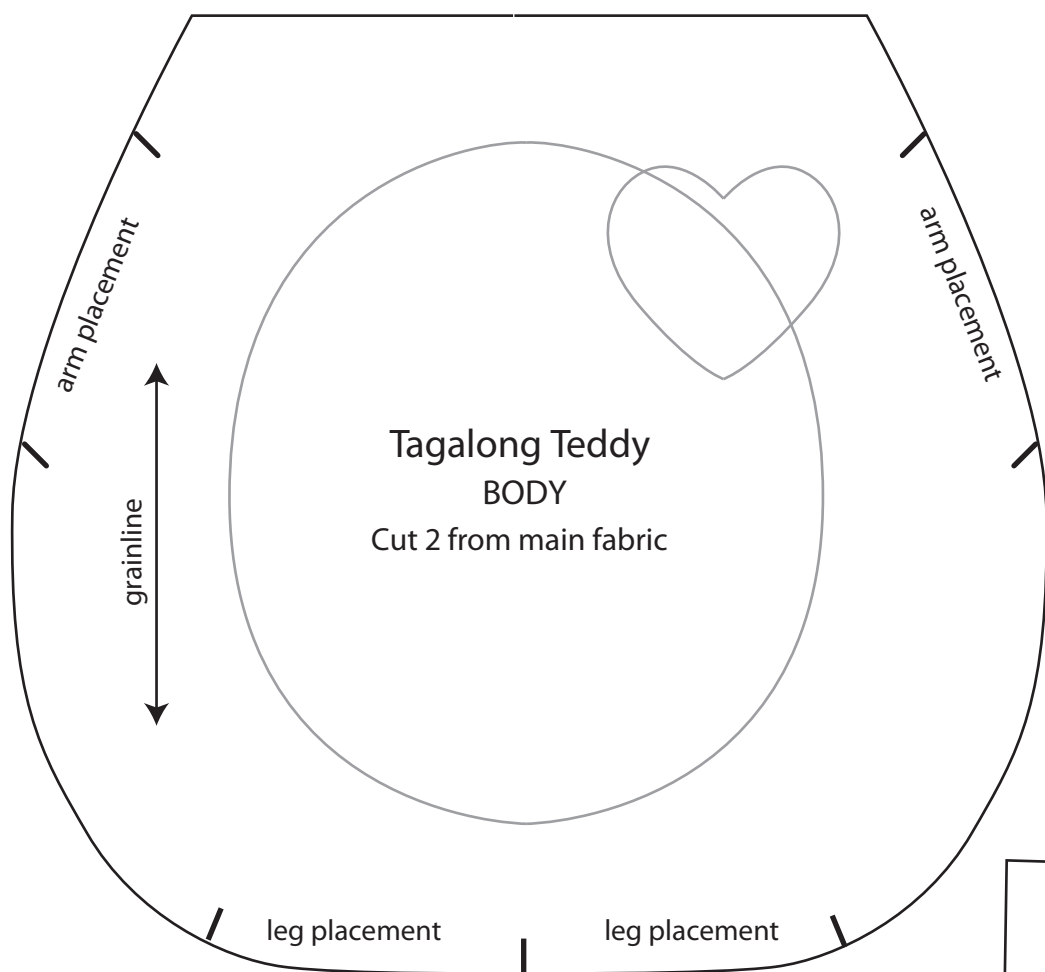


present perfect

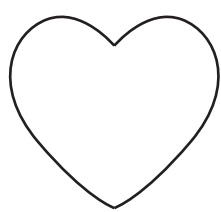
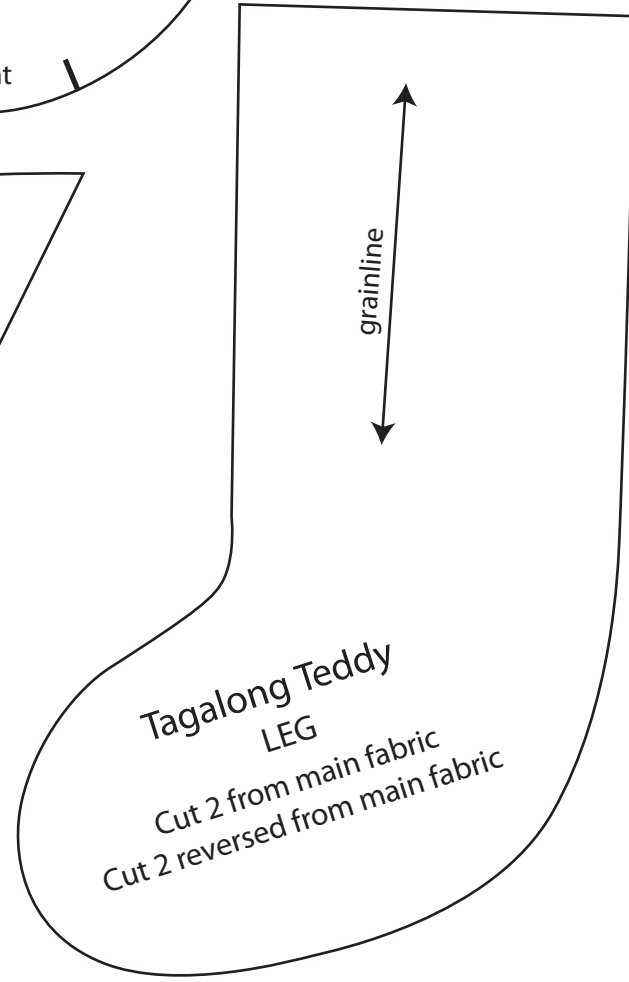
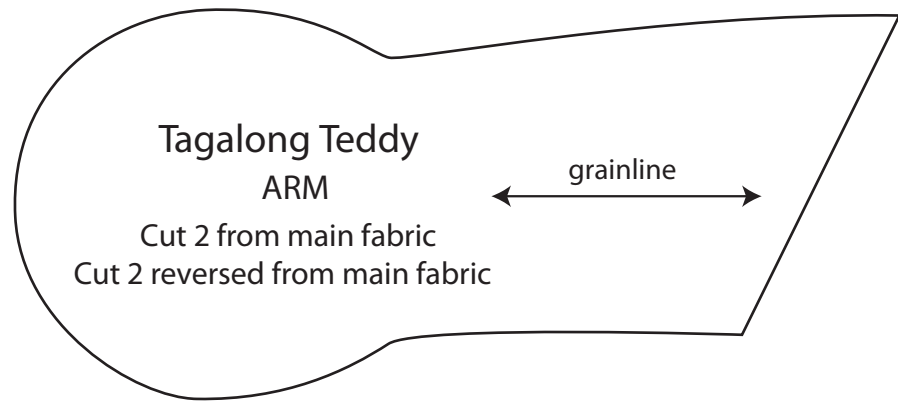
By Betz White

{ pattern insert }

* Tagalong Teddy



Tagalong Teddy
FOOT PAD
Cut 2 from print fabric



Tagalong
Teddy
HEART
Cut 1 from felt

present perfect

By Betz White

{ pattern insert }

* Tagalong Teddy

