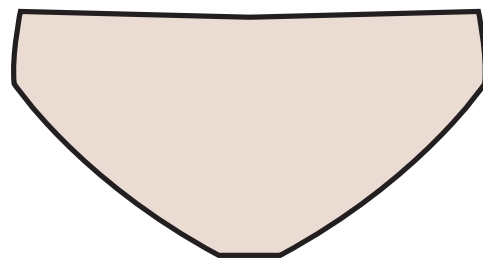
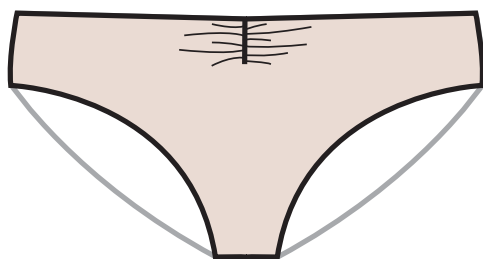
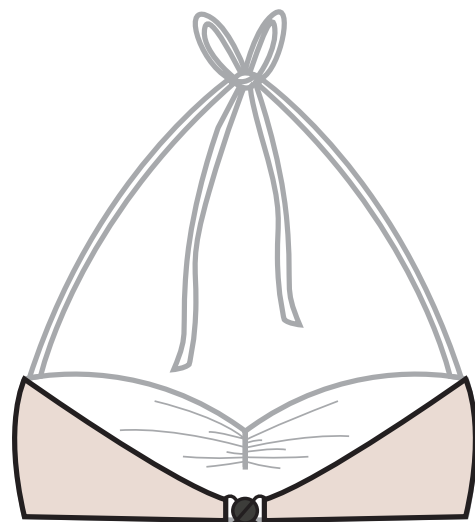
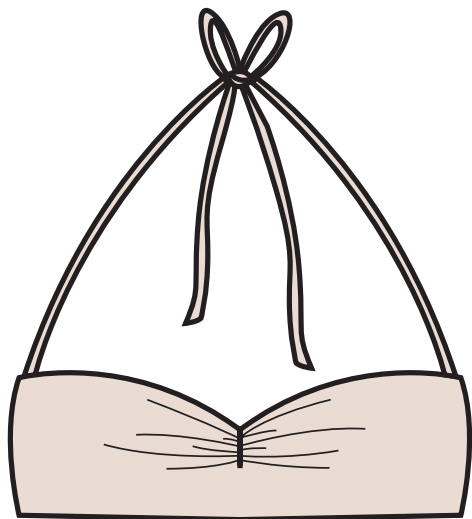


Bathing Suit

Created by *Laura Bolčina* for *Seu,Mama,Seu!*

<http://www.sewmamasew.com/blog2>

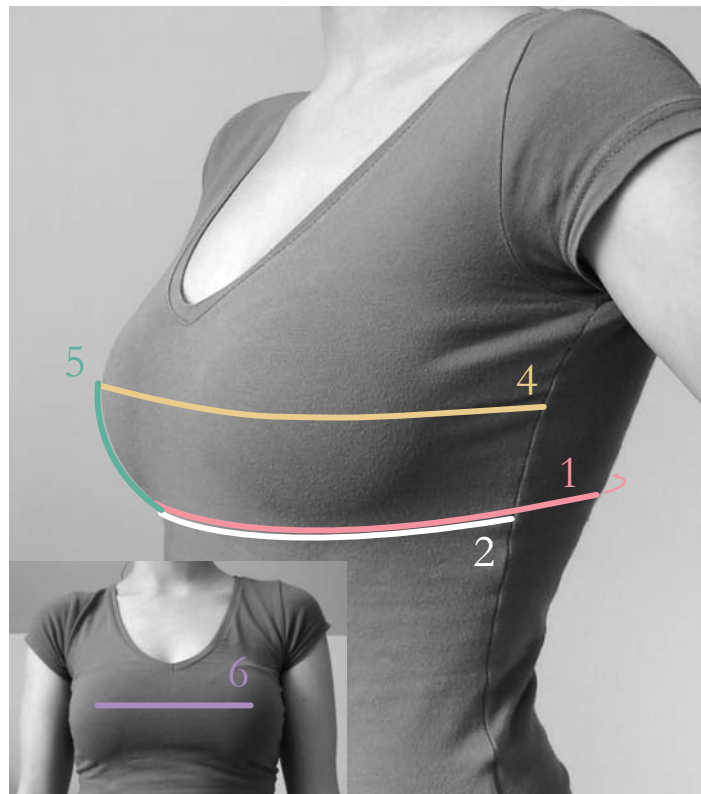


You need:

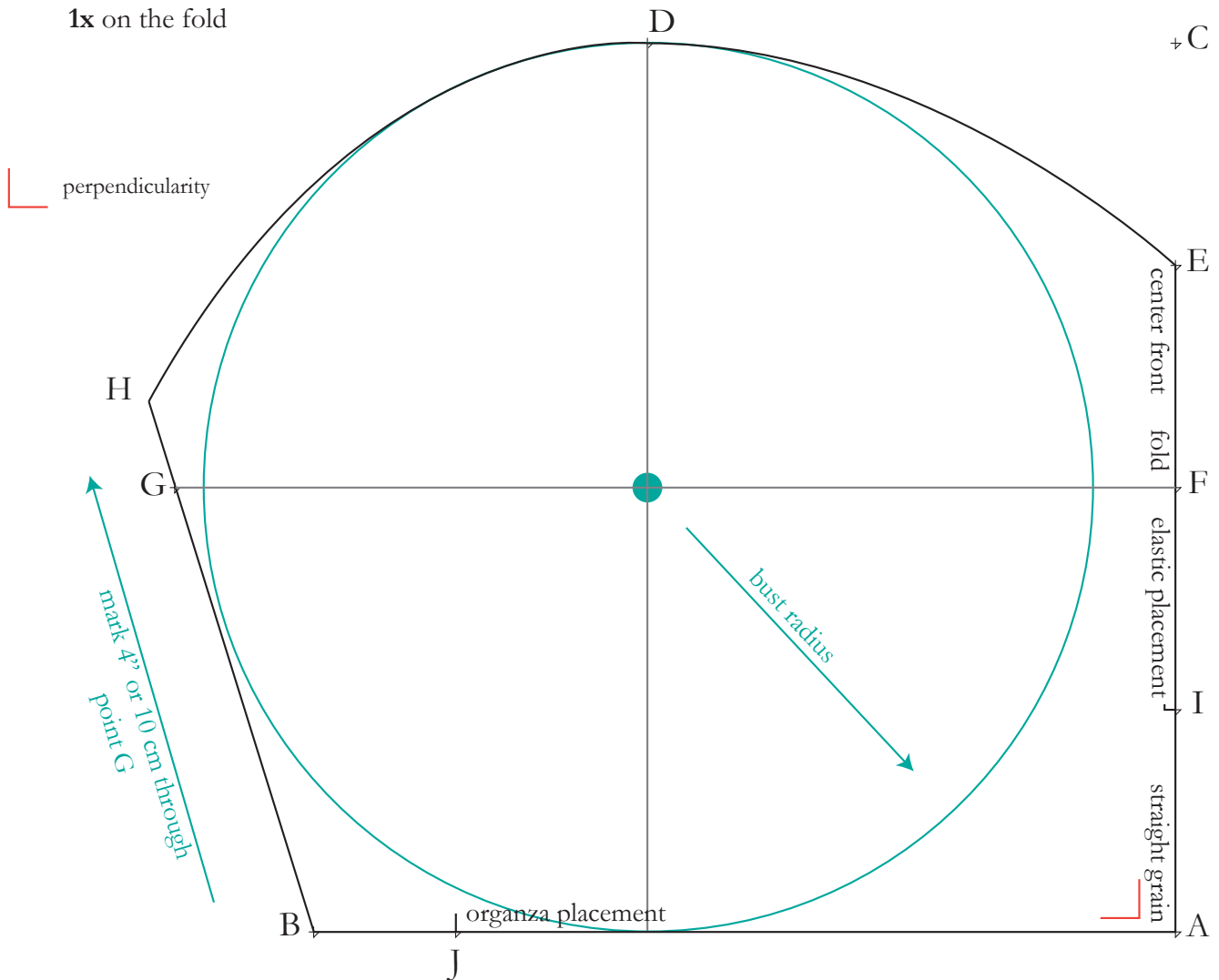
- lycra: cca. 0.6 yd or 0.5 m
- lining (nylon tricot or self fabric): cca. 0.6 yd or 0.5 m
- rubber elastic 5/16" or 8 mm wide: 4.4-6.5 yd or 4.0-6.0 m
- elastic 1/8" or 4 mm wide: cca. 8" or 20 cm
- plastic "sew-in" boning 1/4" or 6 mm wide: 8" or 20 cm
- organza/organza ribbon 5/16" or 8 mm wide: 4-12" or 10-30 cm
- clasp closure

Take your measures:

- (1) under the bust circumference = ____
- (2) under the bust front = ____
- (3) under the bust back = (1) minus (2) = ____
- (4) bust front = across the bust from one side to the other = ____
- (5) bust radius = under the bust to bust point = ____
- (6) bust point to bust point = ____



Top Front



1. Draw the pattern:

A to B = one-half of **(2)**, minus 1-1/8" or 3 cm = ____

A to C = 2 x **(5)** = ____

C to D = one-half of **(6)** = ____

A to E = 3 x **(5)**, divided by 2 = ____

A to F = **(5)** = ____

F to G = one-half of **(4)**, minus 1-3/4" or 4.5 cm = ____

Draw a 4" or 10 cm long line from B through G and mark H.

A to I = one-third of (A to E) = ____

Draw a line from G to F. Draw a line that goes from D downwards and is perpendicular to G to F line.

The intersection of the two lines is the center of a circle with the radius of **(5)**. Draw it.

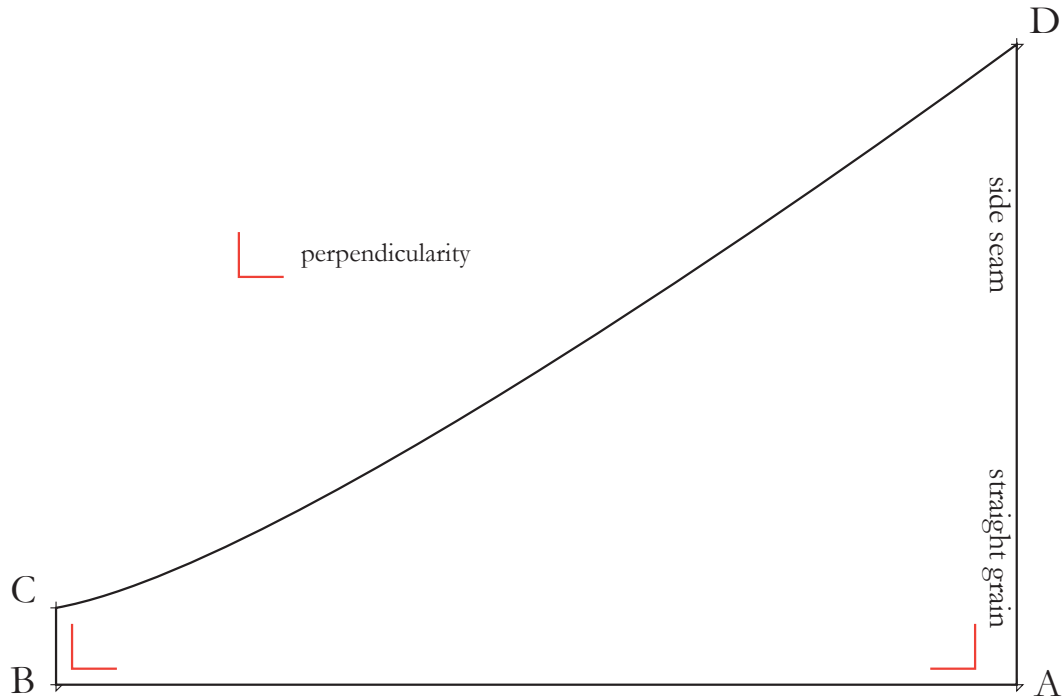
Draw a curve from H to E. Curve must touch D and embrace the top of the circle.

A to J = 0.7 x (A to B) = ____

2. Add the seam allowances: add 3/8" or 1 cm s.a. on sides (A to B), (B to H) and (H to E)

Top Back

2x



1. Draw the pattern:

A to B = one-half of **(3)**, minus 1-3/4" or 2 cm = ____

B to C = clasp loop height = ____

A to D = 4" or 10 cm

Draw a slightly curved line from C to D.

2. *Add the seam allowances:* add 3/8" or 1 cm s.a. on sides (B to A), (A to D) and (D to C)
add 1" or 2.5 cm s.a. on side (B to C)

Neck straps

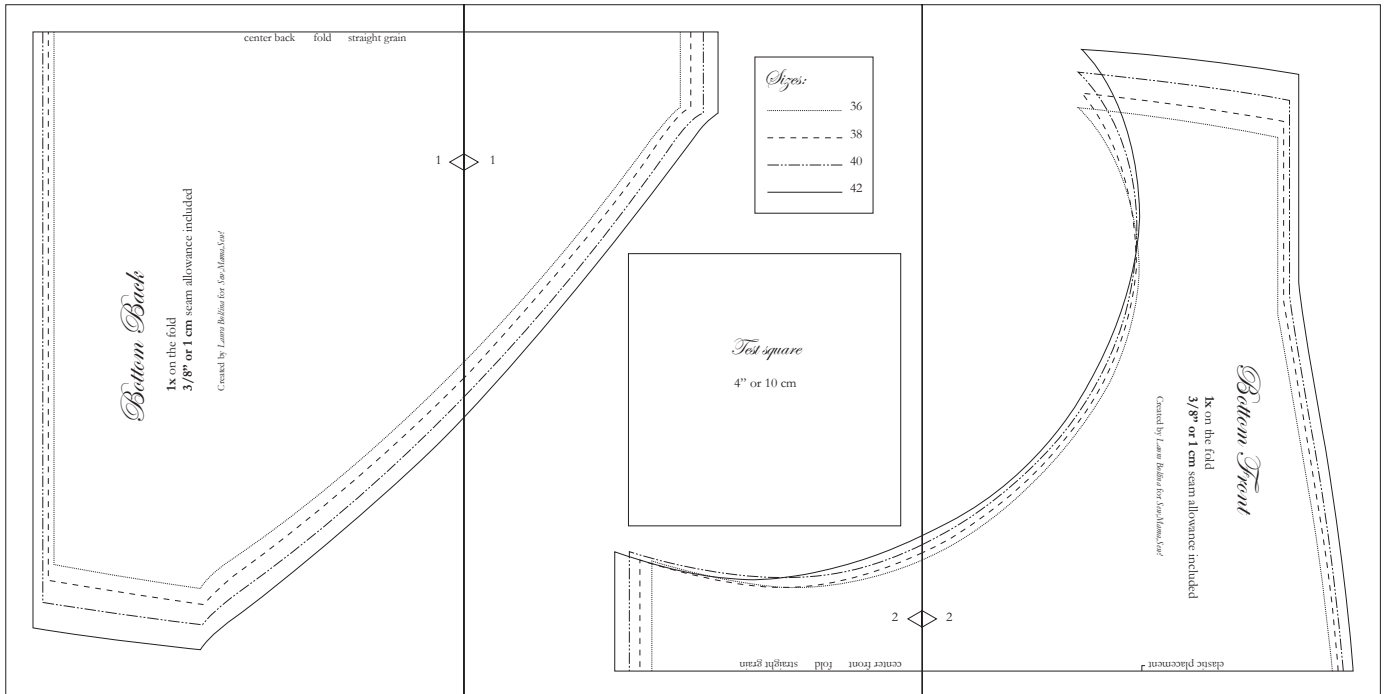
Cut twice 21" x 2" or 52 cm x 5 cm (seam allowances - 3/8" or 1 cm - included)

Lining

When using dark fabric, cut lining just for the front pieces, otherwise cut it for all of them, except for the straps.

Bottom Front and Back

Cut or fold back left edges of the pattern pages and glue them together as shown. Cut in your size.



Size Guide:

EU	36	38	40	42
US	6	8	10	12
Waist	25-1/2" or 64.5 cm	26-1/2" or 67.0 cm	27-1/2" or 70.0 cm	29" or 73.5 cm
Hip	35-1/2" or 90.0 cm	36-1/2" or 92.5 cm	37-1/2" or 95.0 cm	39" or 99.0 cm

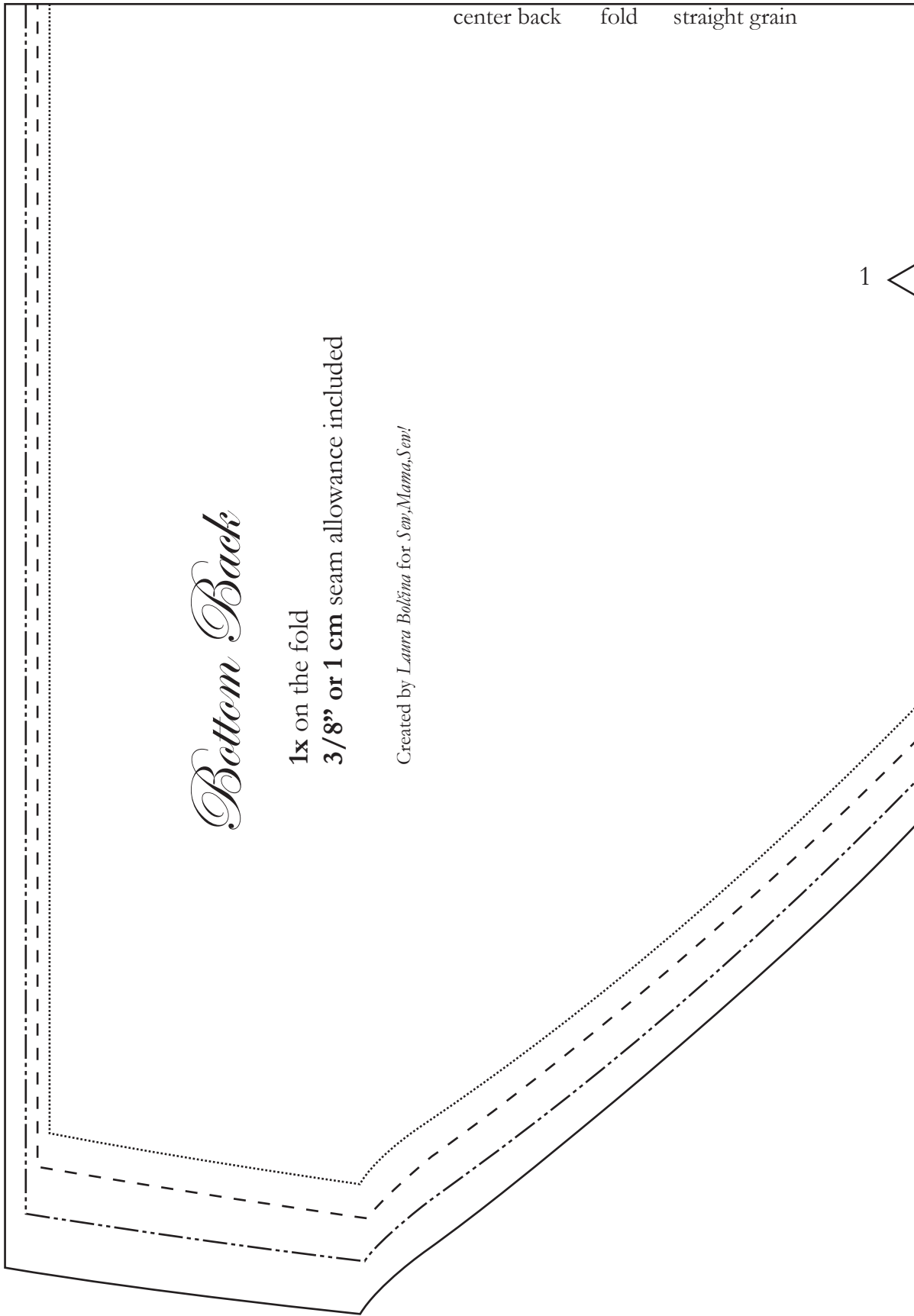
Bottom Back

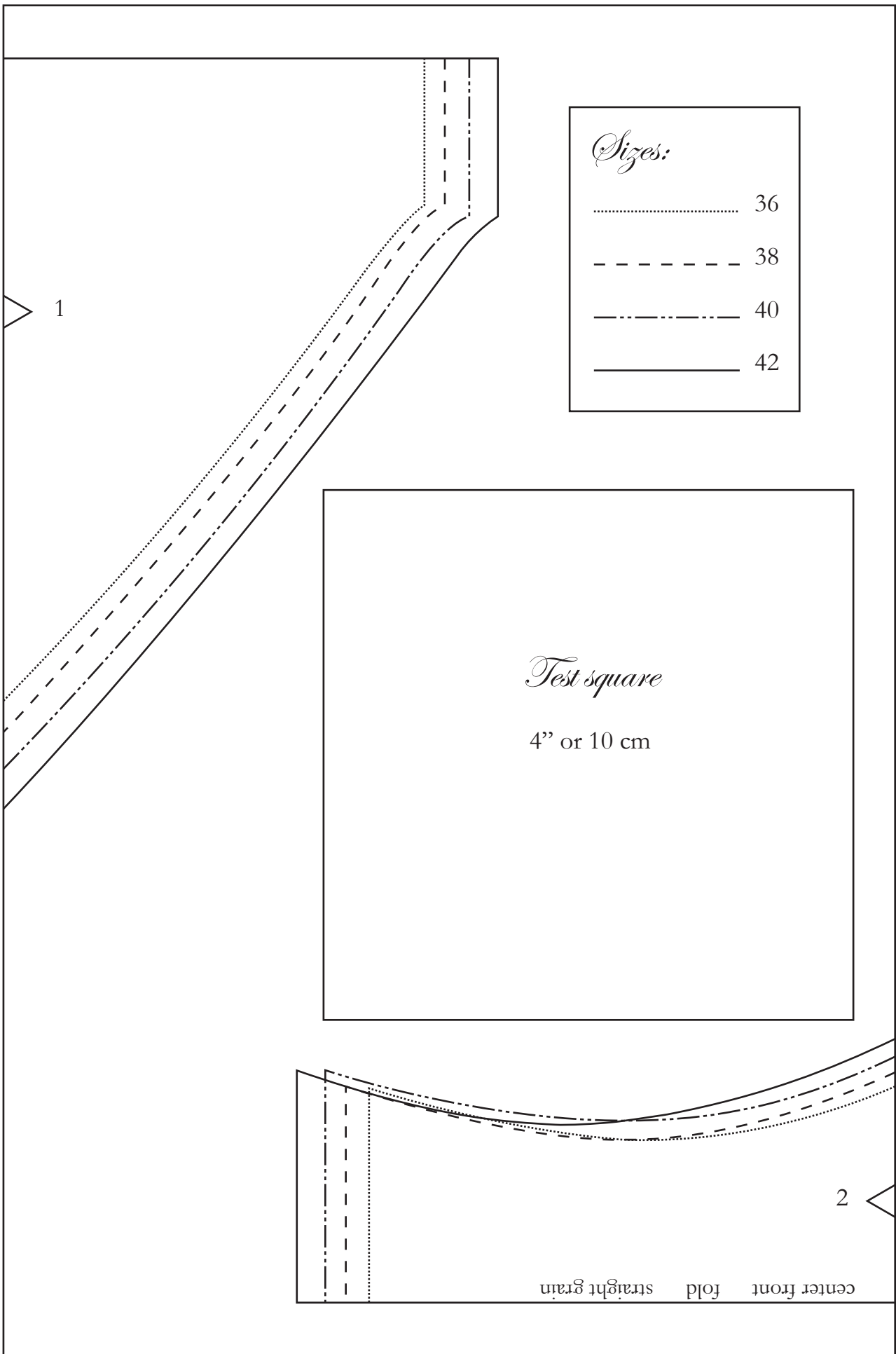
1x on the fold
3/8" or 1 cm seam allowance included

Created by *Laura Boltina* for *Sew, Mama, Sew!*

center back fold straight grain

1





Sizes:

- 36
- 38
- . - . 40
- _____ 42

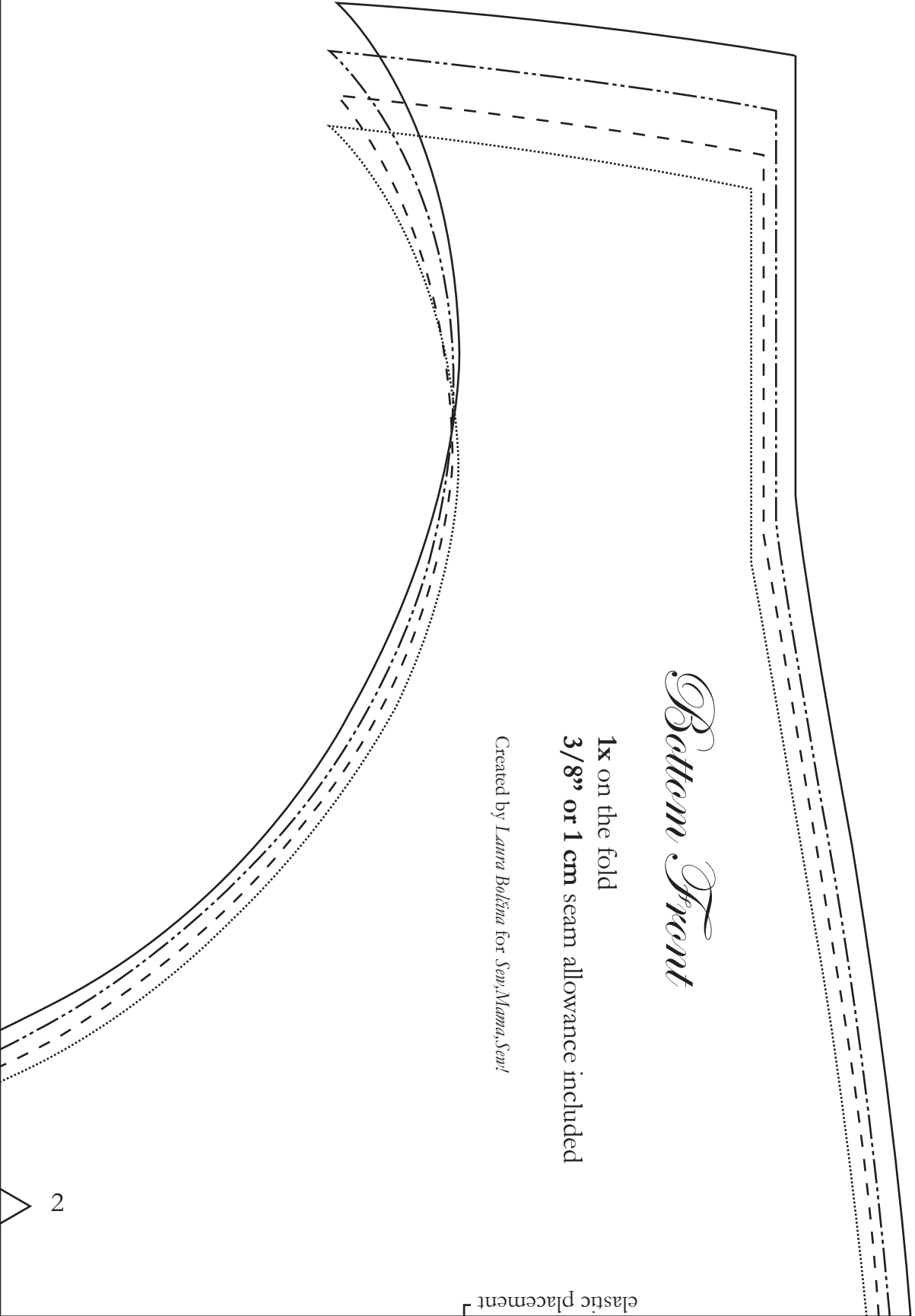
Test square

4" or 10 cm

center front
fold
straight grain

1

2



Bottom Front

1x on the fold
3/8" or 1 cm seam allowance included

Created by *Laura Bohina* for *See, Mama, Sew!*

elastic placement

2